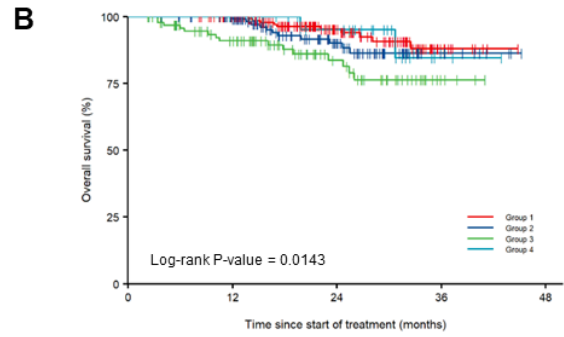
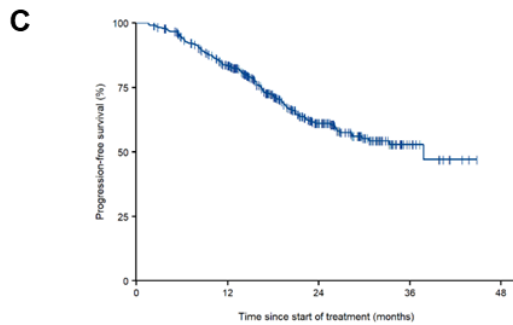


Group 1	174 (0)	144 (12)	59 (71)	6 (118)	0 (124)
Group 2	128 (0)	94 (12)	38 (44)	6 (74)	0 (80)
Group 3	102 (0)	56 (21)	18 (48)	2 (62)	0 (63)
Group 4	30 (0)	27 (1)	14 (9)	2 (19)	0 (21)



Group 1	174 (0)	161 (13)	78 (90)	10 (154)	0 (164)
Group 2	128 (0)	116 (13)	56 (64)	9 (108)	0 (117)
Group 3	102 (0)	75 (19)	36 (54)	4 (83)	0 (87)
Group 4	30 (0)	29 (1)	19 (10)	2 (26)	0 (28)

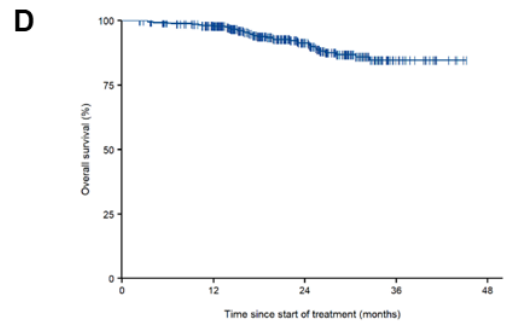


434 (0) 321 (46) 129 (172) 16 (273) 0 (288)

Median PFS: 37.8 months (95% CI: 28.4 – NR)

PFS	Survival probability (95% CI)
6-month	94.1% (91.4–96.0)
12-month	83.5% (79.5–86.7)
24-month	61.1% (55.4–66.2)

* Number of events: 146 (censored 66.36%)
* Median follow-up: 23.7 months (95% CI: 21.6–24.9)



434 (0) 381 (46) 189 (218) 25 (371) 0 (396)

Median OS: NR

OS	Survival probability (95% CI)
6-month	99.1% (97.5–99.6)
12-month	97.8% (95.9–98.9)
24-month	91.4 (87.7–94.0)

* Number of events: 38 (censored 91.2%)
* Median follow-up: 23.5 months (95% CI: 21.6–24.7)

S4 Fig. Survival outcomes in the consecutive cohorts. Progression-free survival (A) and overall survival (B) according to groups. Progression-free survival (C) and overall survival (D) of all patients (n=434). CI, confidence interval; NR, not reached; OS, overall survival; PFS, progression-free survival.